

WGO Porto Alegre Hepatology Training Center Information Package

Name: Hospital de Clínicas de Porto Alegre
Universidade Federal do Rio Grande do Sul

Location: Porto Alegre, Brazil

Center Director: Mario Reis Alvares-da-Silva, MD, PhD



Introduction:

The Porto Alegre Hepatology Training Center was inaugurated in Porto Alegre, Brazil on November 30, 2012.

Mission:

The Porto Alegre Hepatology Training Center mission is:

- Teaching - by creating and offering an innovative Liver Focused Medical Education Program to Brazilian and international medical doctors;
- Research - by qualifying young doctors and working coordinately with Brazilian and/or international partners; and
- Medical assistance - by increasing and improving specialized liver care to public health system clients in Brazil and abroad.

Facilities:

The Hospital de Clínicas de Porto Alegre (HCPA)

HCPA is a public hospital, created in 1970, academically related to Universidade Federal do Rio Grande do Sul (UFRGS), and affiliated with the Brazilian Ministry of Education University Hospitals. Its mission is to provide high-level medical assistance to the population, teach students and young doctors from UFRGS and conduct research. The Brazilian Ministry of Education considers HCPA as the model to be followed by other university hospitals in Brazil, based on its quality and efficiency. HCPA is devoted to care for patients from the Brazilian public health system (Sistema Único de Saúde – SUS); it offers now 792 beds. Researching is another important area in HCPA, coordinated by Grupo de Pesquisa e Pós-Graduação. HCPA has a tradition of encouraging experimental and clinical research, and directly sponsors most of them by its own Research Fund (Fundo de Incentivo à Pesquisa e Eventos do HCPA). Currently, 5 Brazilian Ministry of Sciences and Technology sponsored National Institutes of Health and Technology are located at HCPA. In 2014 HCPA started the construction of two more buildings that will increase by almost 70% its whole capacity. The new hospital complex will allow the reorganization of different areas and patient flow. Being a university hospital, HCPA will also expand the space devoted to teaching and research.

The Gastroenterology Division at HCPA

The Gastroenterology (GI) Division is dedicated to adult patients, and formed by 6 professors from UFRGS Internal Medicine Department (Carlos Francesconi, Ismael Maguilnik, Sérgio Gabriel Silva de Barros, Luiz Edmundo Mazzoleni, Hugo Cheinquer and Mario Reis Alvares-da-Silva) and 7 gastroenterologists from HCPA staff. HCPA offers government-board recognized Fellowship programs in Gastroenterology, Digestive

Endoscopy and Hepatology. The Endoscopy Unit, Digestive Motility Laboratory and Adult Liver Transplant Program (since 1996) are part of the Division (Figure 1). HCPA's Pediatric Gastroenterology Division, Pediatric Liver Transplant Program, Radiology Division and Pathology Division specialized teams often work together with the GI Division team. The Gastroenterology and Hepatology Experimental Laboratory is located at the HCPA Animal Research Center, close to the hospital. Nowadays, HCPA GI Division is the most important university digestive unit in the South of Brazil, displaying a great number of consultations, specialized procedures and in-hospital admittances. The GI Division faculty has important positions and is recognized both nationally and internationally, with published papers in important journals like the New England Journal of Medicine, The Lancet, and Gut.

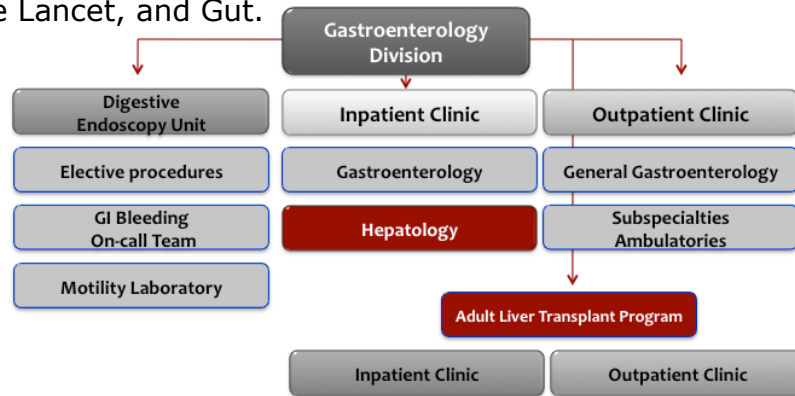


Figure 1. Organization of the Gastroenterology Division at HCPA.

Hepatology as practiced today at HCPA(Figure 2)

Students from UFRGS are regularly received, as well as young medical doctors during their fellowship. The Outpatient Clinic is divided into 6 specialized ambulatories: Viral Hepatitis, Chronic Hepatitis, HIV/Hepatitis Co-infection, Nutrition/NASH, Liver Transplant, and Liver Transplant Recipients. In 2013 was created a new outpatient clinic dedicated to emergency care of liver diseased patients. Currently, In-patient Liver Clinic is responsible for more than half of the whole number of admittances in GI Division. Patients have access to the most advanced drugs commercially available in Brazil as well as investigational drugs as international trials are repeatedly enrolling volunteers at the unit. HCPA is also a liver drug-dispenser unit for public health protease inhibitors hepatitis C treatment (Serviço de Assistência Especializada – Hepatites; Secretaria do Estado de Saúde do Rio Grande do Sul). Endoscopy Unit (Chair: Professor Ismael Maguilnik) is in charge of endoscopic procedures. New endoscopic equipment was recently acquired. The Radiology Division is responsible for liver biopsies, diagnostic procedures and interventional radiological procedures, as TIPS and hepatocellular carcinoma intravenous and percutaneous treatment.

The number of patients admitted to the Liver Clinic as well as those been followed at the Outpatient Liver Clinic have increased in the last few years, almost above our limit, and the number of liver transplant procedures have almost duplicated in 2013 in comparison to 2012. Also, patients with liver diseases are often in need to be followed at HCPA Emergency Room and Intensive Care Unit. There is a trend in the whole world for liver diseases to increase. We need to be prepared to face this growth.

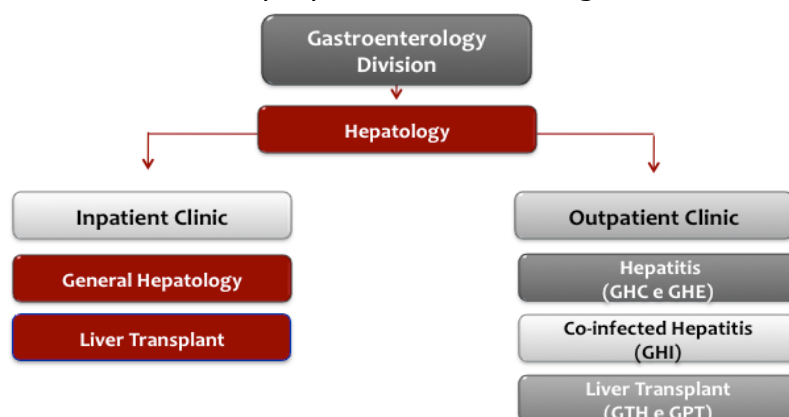


Figure 2. Liver Clinic at HCPA.

WGO Hepatology Training Center at HCPA

This innovative WGO TC will offer Brazilian and international medical doctors several courses of different lengths each (from 16 to 480 hours). Modules will form each course, and these modules can be continuous or not. Students will choose the duration of the course. Minimal number of students/course: 1. Table 3 displays the schedule of the Hepatology Master Course, with 3 to 4-month duration (480 hours).

Areas of Training and Courses Offered:

- a) General Hepatology (Hepatology Master Course)
- b) Viral Hepatitis
- c) Co-infection
- d) Hepatocellular Carcinoma
- e) Liver Transplantation
- f) Critical and Emergency Care in Hepatology
- g) Liver Pathology
- h) Tissue Elastography

Table 3. WGO Hepatology TC at HCPA - Schedule

Time	MON	TUE	WED	THU	FRI
08:00	Liver Ward	Liver Ward	Liver Pathology	Liver Ward	Liver Ward
09:30	Liver Round	Liver Round	Liver Round	Liver Round	Liver Round
11:00	Journal Club	LT Round		Clinical Review	
12:00			LT OC (GTH, GPT)	Metabolic Care OC	Tissue Elastography
14:00	Liver Surgery OC	Toxic Hepatitis OC		Liver Radiology	
16:00			Co-infection OC (GHI)	Pediatric LT OC	
19:00	Hepatitis OC (GHE)		On-distance tutorial		Hepatitis OC (GHC)
20:00					

Where: LT= liver transplant; OC= outpatient clinic; GHE= Gastroenterology Hepatitis; GTH= Gastroenterology Liver Transplant; GPT= Gastroenterology Liver Transplant Recipients; GHI= Gastroenterology Co-Infection Hepatitis; GHC= Gastroenterology Chronic Hepatitis; On-distance= Distance Learning.

Scheduled special short-duration courses in 2015

- a) *Hepatitis C Course I* – TBD.Venue: Hospital de Clínicas de Porto Alegre.
- b) *Non-alcoholic fatty liver disease: facing the epidemic* – TBD. Venue: Hospital de Clínicas de Porto Alegre.
- c) *Hepatitis C Course II* – TBD. Venue: Hospital de Clínicas de Porto Alegre.
- d) *Hepatitis C in 2015: Diagnosis and Treatment* – tbd. In association with Clínica de Gastroenterología, Universidad de La Republica de Uruguay and The Society for

Worldwide Medical Exchange, Miami, USA. Venue: Hospital de Clínicas de Porto Alegre.

e) *Hepatocellular Carcinoma Course* – TBD. Venue: Hospital de Clínicas de Porto Alegre.

WGO Porto Alegre Hepatology Training Center will support The VII Joint Meeting Liver & IBD – August 13 to 15. Venue: Sheraton Reserva do Paiva, Recife, Brazil.

Additional information regarding any of the above-cited courses can be requested to the center secretariat.

Certifications:

- Certificates are provided.
- Applicants can choose a specific course (short duration courses) or apply for an Elective (1 to 4-month duration) on General Hepatology, Viral Hepatitis, Co-infection, Hepatocellular Carcinoma, Liver Transplantation, Critical and Emergency Care in Hepatology, Liver Pathology, and Tissue Elastography Course.
- Short duration courses are limited to 20 trainees each. Electives are open on an individual basis.
- Official language is Portuguese. Electives are available also in English.

Trainee Application Process and Requirements:

National and international trainees contact for further information on courses: Interested applicants can contact the HCPA GI Division by email fsoares@hcpa.ufrgs.br or phone +55 51 33598307. WGO Porto Alegre Training Center Director can be assessed by email marioreis@live.com.

Regulatory Requirements:

Since regulatory requirements vary accordingly to the course's length and to the trainees' origin (national or international), applicants must directly contact the training center for further information.

Faculty and Staff:

Prof. Mario Reis Alvares-da-Silva, MD, PhD
Director, WGO Porto Alegre Hepatology Training Center

Prof. Carlos Fernando Francesconi, MD, PhD
Head, GI and Hepatology Division

Prof. Ismael Maguilnik, MD, MSc
Head, Endoscopy Unit

GI/Hepatology Division

Prof. Luiz Edmundo Mazzoleni, MD, PhD

Prof. Hugo Cheinquer, MD, PhD

Dr. Alexandre de Araujo, MD, PhD

Dr. Matheus Michalczuk, MD, MSc

Dr. Antonio de Barros Lopes, MD, MSc

Suzana Müller, RN, PhD

Pediatric GI/Hepatology Division

Prof. Themis Reverbel da Silveira, MD, PhD

Liver Pathology

Prof. Carlos Thadeu Cerski, MD, PhD

Nutrition/NASH

Prof. Valesca Dall'Alba, RD, PhD
Luiza Padilha, RD

Liver Transplant/Surgery

Prof. Cleber Kruel, MD, PhD
Soraia Arruda, RN, *Nurse Coordinator*
Dr. Aljamir Chedid, MD, PhD
Dr. Cleber Rosito Kruel, MD, PhD

Endorsements:

The Porto Alegre Hepatology Training Center has been endorsed by

- the World Gastroenterology Organisation (WGO)
- the Brazilian Federation of Gastroenterology

Funding / Sponsorship:

Funding and/or sponsorship is currently received from the following sources:

- Hospital de Clínicas de Porto Alegre
- Merck, Sharp & Dohme